

MONTHLY MEMBERSHIP PROGRESS REPORT

District 318 E

Results as of: 8/31/2024

GMT:

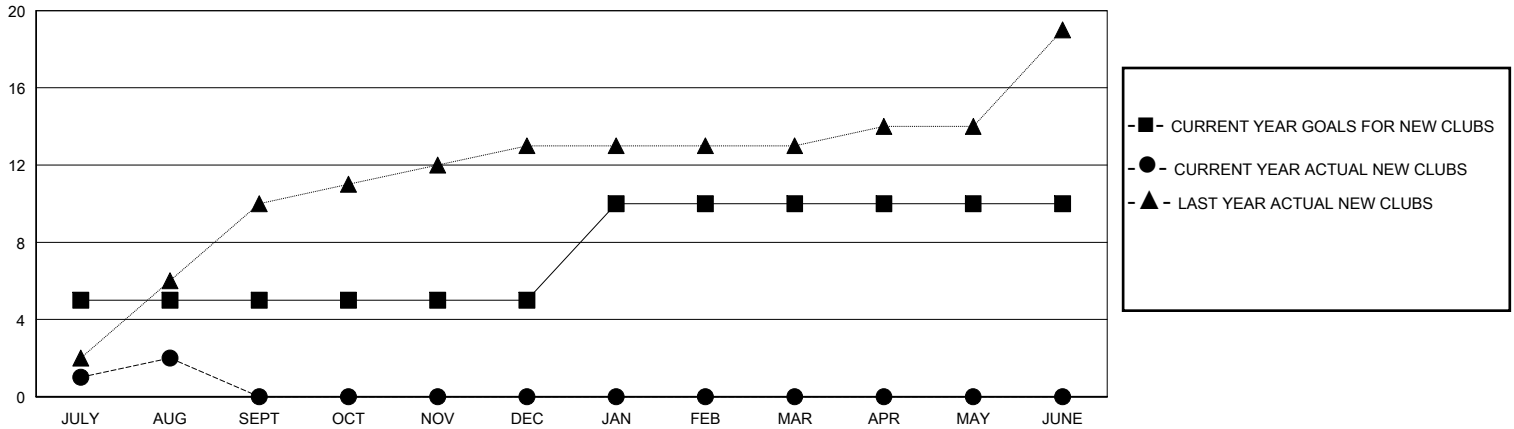
LOCATION INDIA

GMT CA

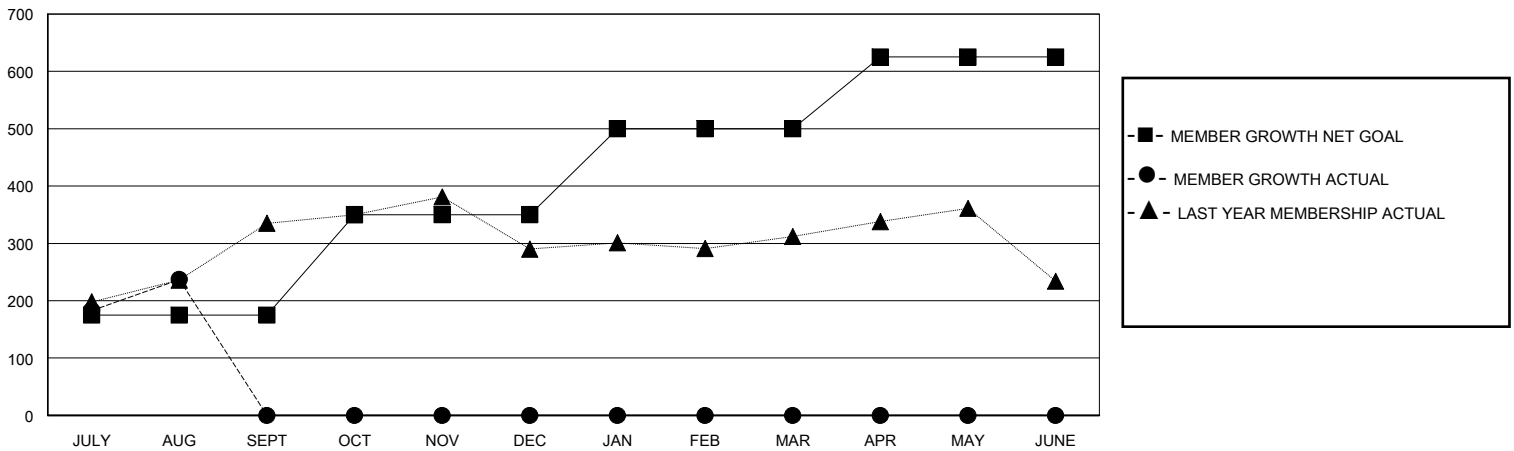
| Clubs | | | |
|-----------------------|---------------|-----------|---------------|
| RESULTS FOR 2024-2025 | | | |
| QUARTER | NEW CLUB GOAL | NEW CLUBS | DROPPED CLUBS |
| JULY/AUG/SEPT | 5 | 2 | 1 |
| OCT/NOV/DEC | 0 | 0 | 0 |
| JAN/FEB/MAR | 5 | 0 | 0 |
| APR/MAY/JUNE | 0 | 0 | 0 |

| Members | | | |
|-----------------------|------------------------|----------------------|--|
| RESULTS FOR 2024-2025 | | | |
| QUARTER | MEMBER GROWTH NET GOAL | MEMBER GROWTH ACTUAL | DROPPED MEMBERS ACTUAL (including transfers) |
| JULY/AUG/SEPT | 175 | 326 | 69 |
| OCT/NOV/DEC | 175 | 0 | 0 |
| JAN/FEB/MAR | 150 | 0 | 0 |
| APR/MAY/JUNE | 125 | 0 | 0 |

GOALS AND ACTUAL NEW CLUBS CUMULATIVE



GOALS AND ACTUAL MEMBERS CUMULATIVE



| | | | |
|-------------------------|---|---|---------------------------------------|
| DROPPED CLUBS: 1 | 64 CLUBS OF 189 ADDED 1 OR MORE NEW MEMBERS | GENDER DISTRIBUTION | |
| | | MALE 5,307 (79.92%) | FEMALE 1,333 (20.08%) |
| DROPPED MEMBERS | | CLICK HERE FOR CUMULATIVE MEMBERSHIP DATA | TOTAL FAMILY UNIT MEMBERS 2,200 |
| DECEASED 4 | CLUB CANCELLED 0 | | FAMILY MEMBERS PAYING HALF DUES 1,172 |
| OTHER 65 | TOTAL 69 | | |